



HOLLAND ROAD, LONDON W14



HOLLAND ROAD W14

A spacious and vibrant 5 storey family home of c. 4100 sq.ft. offering many original features. The house has large airy rooms and benefits from a 100ft garden and an artist's studio on the top floor. Currently arranged with 5 bedrooms the studio could be converted back to provide a further 2 double bedrooms plus 1 bathroom.

Accommodation:

Raised Ground Floor: Hallway; Double reception room extending to almost 40'; Study; Terrace; Cloakroom (on landing)

Lower Ground: Kitchen leading to garden; Dining Room (currently used as a snooker room); Conservatory with doors to garden; WC; Utility Room; Vaults; Garden

First Floor: Master Bedroom; Second double bedroom currently fitted out as very large dressing room; Bathroom; Terrace

Second Floor: Two Double Bedrooms; Single Bedroom; Family Bathroom (on landing)

Third Floor: Artist's Studio (which could be converted to 2/3 bedrooms); WC; Balcony; Roof Terrace

Holland Road is located in close proximity to all the amenities and transport links of both High Street Kensington and Holland Park Avenue and is a short walk to Holland Park itself.

Freehold, London Borough of Kensington & Chelsea



HOLLAND ROAD, W14

Approximate Gross Internal Area:

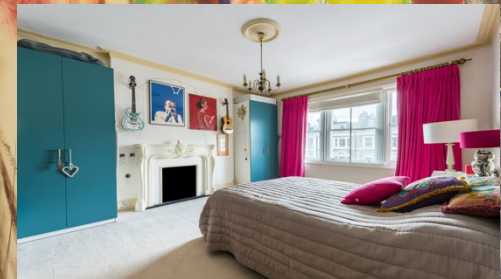
4125 Sq Ft – 383.21 Sq M

Holland Road, W14

Approx. Gross Internal Area
4125 Sq Ft – 383.21 Sq M
Approx. Vault Area
52 Sq Ft – 4.83 Sq M



For illustration purposes only. Not to scale.
All measurements are taken and shown at floor level.
www.r3photography.co.uk © Photography / Floor Plans / Lease Plans / EPCs



Brochure design by R3 Photography : www.r3photography.co.uk : info@r3photography.co.uk

Disclaimer: These particulars do not form part of any offer or contract and should not be relied upon as statements or representation of fact. Any areas, measurements or distances are approximate. The text, photographs and floor plan are for guidance only and are not necessarily comprehensive. Purchasers must satisfy themselves by inspection or otherwise.

MILTON STONE
H&P
Incorporating HARBERS AND HARBRON
53 Abingdon Road, London W8 6AN
0207 938 2311
Email: info@miltonstone.com
www.miltonstone.com