



MILTON
STONE

Biddulph Road, W9

£3,595,000 Freehold

3 bedroom house for sale

Description

A bright, spacious and charming end of terrace family house in the heart of Maida Vale. This 'arts and crafts' style home offers two floors of entertaining space and a beautiful 72 ft rear garden. Biddulph Road is a short walk from the shops and restaurants of Clifton Road and close to Maida Vale and Warwick Avenue underground stations (Bakerloo Line).

Tenure: Freehold

Tenure

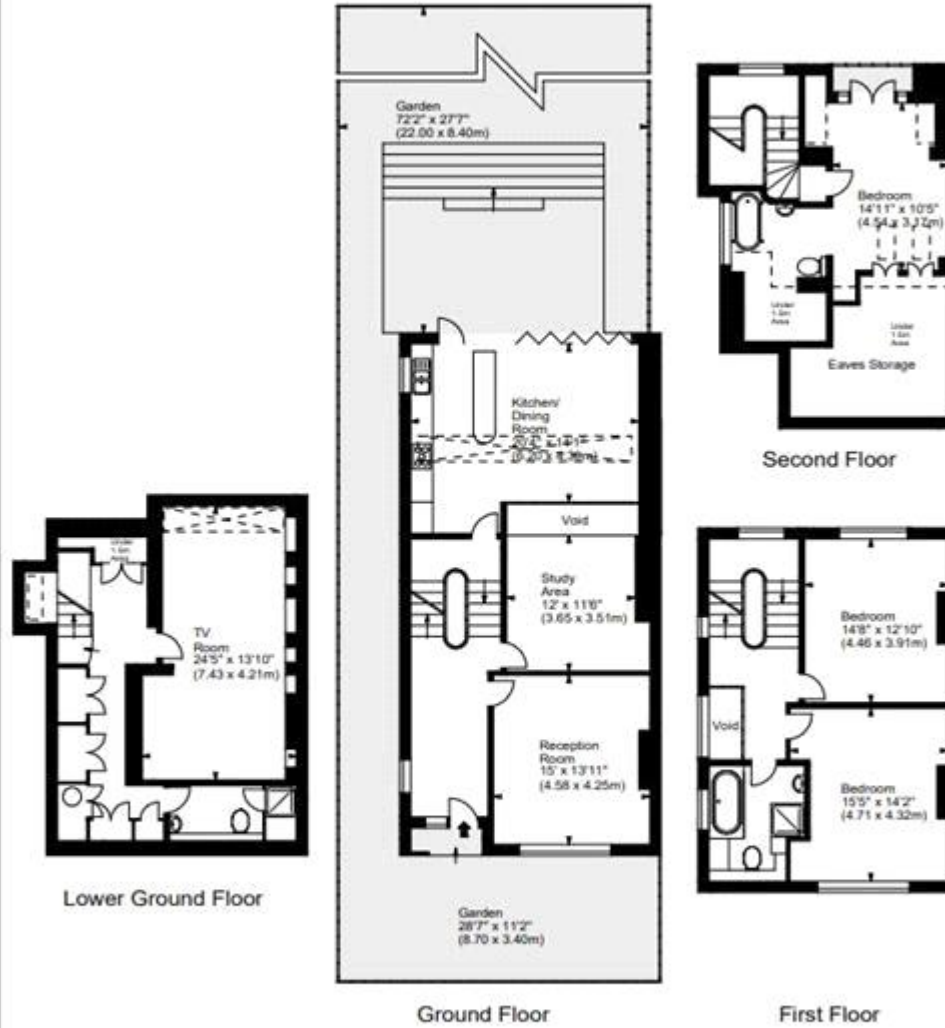
Freehold



Biddulph Road, W9

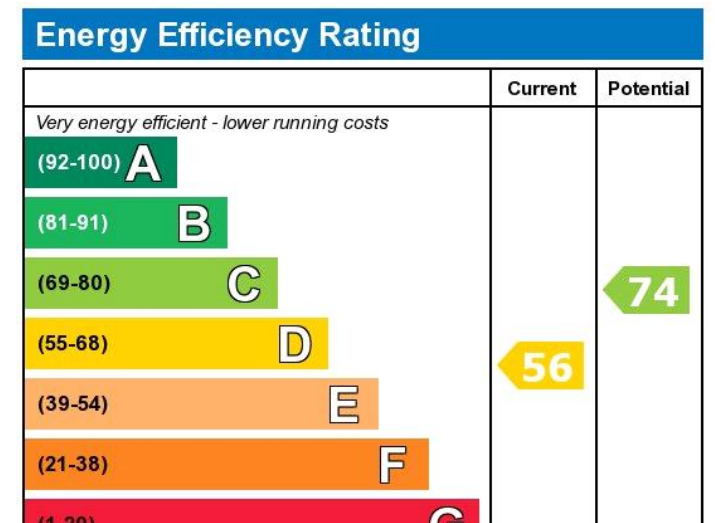


APPROX. GROSS INTERNAL AREA (EXCLUDING EAVES STORAGE & VOIDS) : 2516 SQ FT - 233.74 SQ M
APPROX. EAVES STORAGE : 148 SQ FT - 13.75 SQ M
APPROX. TOTAL (EXCLUDING VOIDS) : 2664 SQ FT - 247.49 SQ M



For illustration purposes only. Not to scale.
All measurements are taken and shown at floor level.
www.r3photography.co.uk © Photography / Floor Plans / Lease Plans / EPCs





Viewing by appointment only
 Milton Stone - Head Office
 53 Abingdon Road, London W8 6AN
 Tel: 0207 938 2311 Email: info@miltonstone.com Website: www.miltonstone.com