



MILTON  
STONE

# St Helens Gardens, W10

£650,000 Leasehold

2 bedroom apartment for sale

## Description

A beautiful first floor flat in this period house close to Notting Hill. This two double bedroom flat is elegantly appointed and offers a large reception room with an open plan kitchen, high ceilings and large sash windows. The bedrooms have ample storage and are peacefully located to the rear of building. St Helens Gardens is close to the vibrant and eclectic range of shops and restaurants on Portobello Road and Golborne Road. Latimer Road tube on the Hammersmith, City and Circle Line is nearby.

Tenure: Leasehold (985 years)

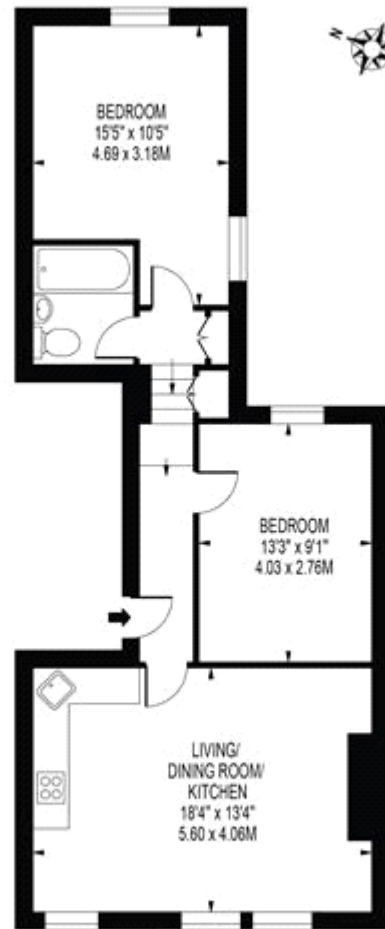
## Tenure

Leasehold



## ST. HELEN'S GARDENS

APPROXIMATE GROSS INTERNAL FLOOR AREA: 642 SQ FT - 59.67 SQ M



FIRST FLOOR

FOR ILLUSTRATION PURPOSES ONLY

THIS FLOOR PLAN SHOULD BE USED AS A GENERAL OUTLINE FOR GUIDANCE ONLY AND DOES NOT CONSTITUTE IN WHOLE OR IN PART AN OFFER OR CONTRACT. ANY INTENDING PURCHASER OR LESSEE SHOULD SATISFY THEMSELVES BY INSPECTION, SEARCHES, ENQUIRIES AND FULL SURVEY AS TO THE CORRECTNESS OF EACH STATEMENT. ANY AREAS, MEASUREMENTS OR DISTANCES QUOTED ARE APPROXIMATE AND SHOULD NOT BE USED TO VALUE A PROPERTY OR BE THE BASIS OF ANY SALE OR LET.



Energy Efficiency Rating		
	Current	Potential
Very energy efficient - lower running costs		
(92-100) <b>A</b>		
(81-91) <b>B</b>		
(69-80) <b>C</b>	78	82
(55-68) <b>D</b>		
(39-54) <b>E</b>		
(21-38) <b>F</b>		
(1-20) <b>G</b>		

Viewing by appointment only  
 Milton Stone - Head Office  
 53 Abingdon Road, London W8 6AN  
 Tel: 0207 938 2311 Email: [sophie@miltonstone.com](mailto:sophie@miltonstone.com) Website: <http://www.miltonstone.com>