



MILTON
STONE

Oval Mansions, Kennington Oval, London

£849,000

2 bedroom flat for sale

Description

A bright and well presented, two double bedroom, Penthouse maisonette, situated on the third and fourth floors of this popular mansion building next to The Oval Cricket ground.

The property benefits from wooden floors throughout, a private west facing roof terrace and access to a communal terrace overlooking the cricket ground.

Oval Mansions is located within a short walk of Vauxhall Mainline Station and the Underground network via Vauxhall and Oval Stations.

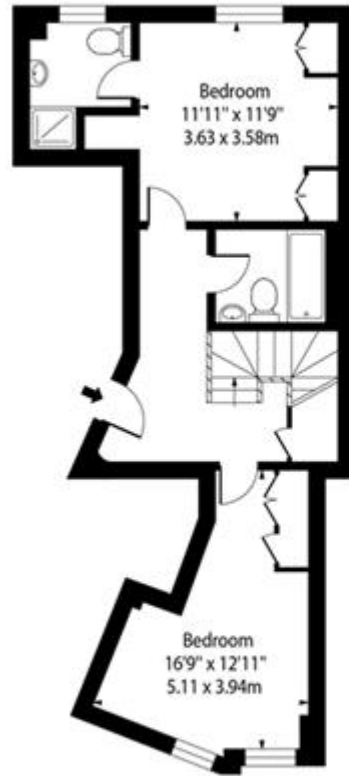
Leasehold 980 years

Tenure

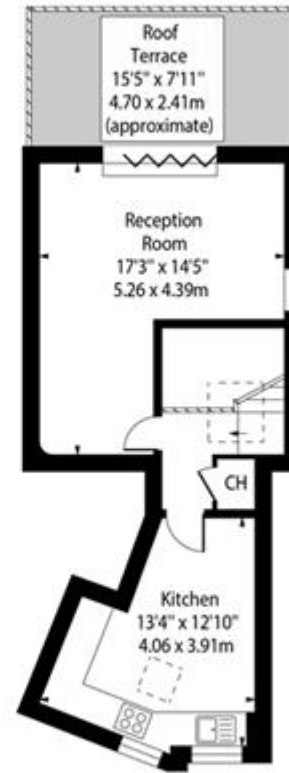
Leasehold



Oval Mansions,
London SE11



Third Floor



Fourth Floor

Approx Gross Internal Area 903 Sq Ft - 83.89 Sq M

This floor plan should be used as a general outline for guidance only and does not constitute in whole or in part an offer or contract.
Any intending purchaser or lessee should satisfy themselves by inspection, searches, enquiries and full survey as to the correctness of each statement.
Any areas, measurements or distances quoted are approximate and should not be used to value a property or be the basis of any sale or let.



Energy Efficiency Rating		
	Current	Potential
Very energy efficient - lower running costs		
(92-100) A		
(81-91) B		
(69-80) C	75	77
(55-68) D		
(39-54) E		
(21-38) F		
(1-20) G		

Viewing by appointment only
 Milton Stone - Head Office
 53 Abingdon Road, London W8 6AN
 Tel: 0207 938 2311 Email: sophie@miltonstone.com Website: <http://www.miltonstone.com>