



MILTON
STONE

Radley Mews, London

£2,995,000

3 bedroom mews house for sale

Description

Situated in this desirable cobbled mews just south of Stratford Village this generously proportioned 3 bedroom Freehold mews house provides in excess of 1900 sqft (177 sqm) of accommodation over three floors.

The main reception room boasts open sky views with a private roof terrace. The house also benefits from an integral garage with an automated door, separate utility room and wine cellar.

This charming location offers a fine selection of local café's, restaurants and shops, as well as being within easy reach of High Street Kensington and Gloucester Road Underground stations.

- * 31x18 Reception with open views and a Roof Terrace
- * 24x20 Kitchen/Breakfast Room with separate Utility Room
- * 20x15 Master Bedroom with Ensuite Shower Room
- * Two Further Double Bedrooms
- * Family Bathroom
- * 20x8 Integral Garage with automated door to Mews
- * Guest Cloakroom
- * Wine Cellar

Tenure

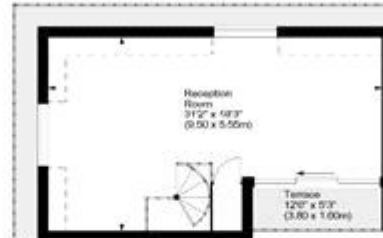
Freehold



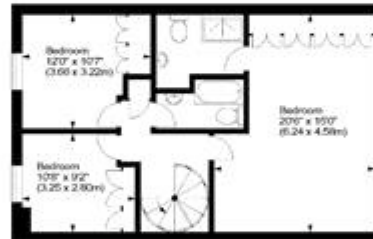
Radley Mews, W8



Approx. Gross Internal Area 1933 Sq Ft - 179.58 Sq M
(Including Garage & Wine Cellar)



Second Floor



First Floor



Ground Floor



Wine Cellar

For illustration purposes only. Not to scale.
All measurements are taken and shown at floor level.
www.r3photography.co.uk © Photography / Floor Plans / Lease Plans / EPCs





Energy Efficiency Rating		
	Current	Potential
Very energy efficient - lower running costs		
(92-100) A		
(81-91) B		82
(69-80) C		
(55-68) D	62	
(39-54) E		
(21-38) F		
(1-20) G		

Viewing by appointment only
 Milton Stone - Head Office
 53 Abingdon Road, London W8 6AN
 Tel: 0207 938 2311 Email: sophie@miltonstone.com Website: <http://www.miltonstone.com>