



Cranley Gardens, SW7

£1,650,000

2 bedroom flat for sale

Description

A well presented third floor, two double bedroom flat with a lift and the advantage of a West-facing roof terrace.

Cranley Gardens is located between Fulham Road and Old Brompton Road therefore is ideally situated close to excellent shops, restaurants and transport facilities of Gloucester Road and South Kensington. Leasehold, plus Share of Freehold.

Service charge: £3,000 approximately per annum.

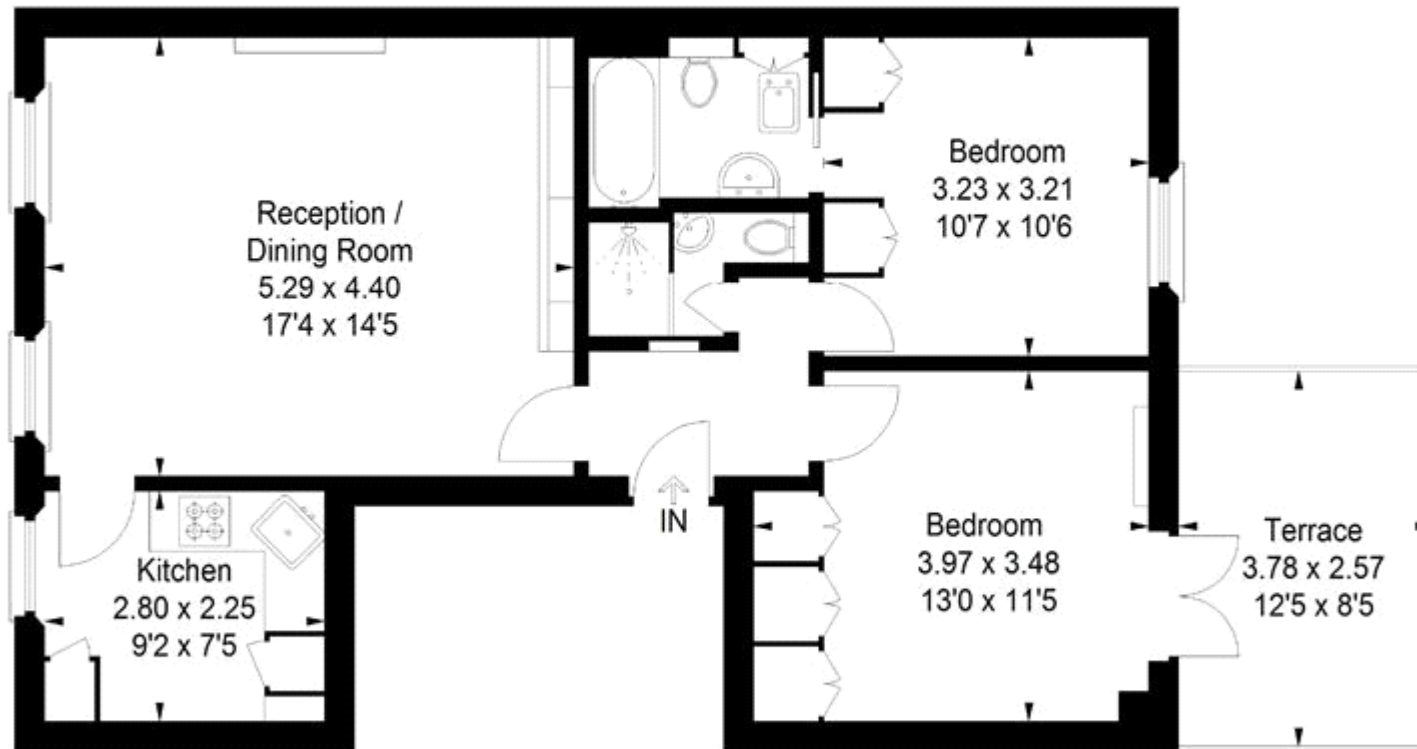
Tenure

Share of Freehold



Cranley Gardens, SW7

Approximate Gross Internal Area
65 sq m / 700 sq ft



Third Floor

FLOORPLANZ © 2014 0845 6344080 Ref 121800

This plan is for layout guidance only. Drawn in accordance with RICS guidelines. Not drawn to scale unless stated. Windows & door openings are approximate. Whilst every care is taken in the preparation of this plan, please check all dimensions, shapes & compass bearings before making any decisions reliant upon them.

