

ILCHESTER PLACE W14



Price on Application

MILTON
STONE

ILCHESTER PLACE W14

DESCRIPTION

An exceptional seven bedroom family house with double garage parking located on this most prestigious and sought after residential street adjacent to the entrance to Holland Park. This wide, low built house has been meticulously refurbished throughout and features a 64 ft south facing rear garden and terrace accessed via French doors from the kitchen/family room, a double aspect 34 ft formal reception room, a fabulous gym/studio with double height 4.2m ceilings and a self-contained one bedroom apartment with its own separate entrance. Ilchester Place is set within the Holland Park Conservation Area, moments from the local restaurants and shops and a short walk from the shopping and transport facilities of High Street Kensington

.

Price on Application

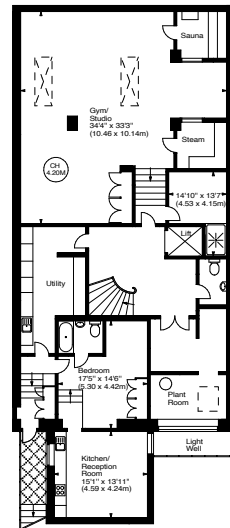
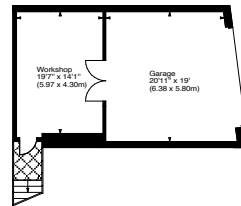


ILCHESTER PLACE W14

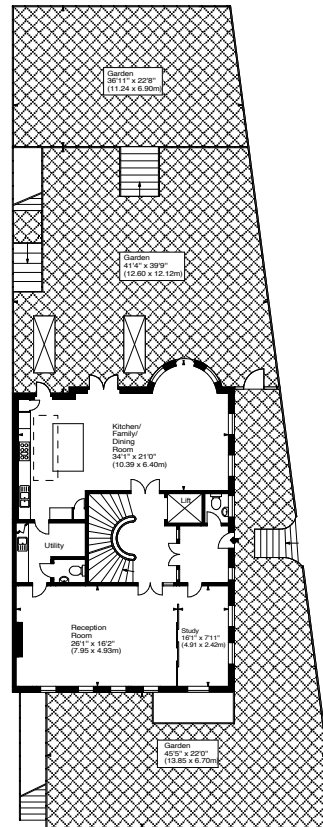
Ilchester Place, W14



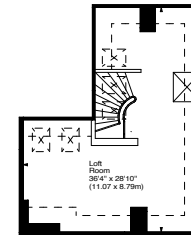
Approx. Gross Internal Area
 7756 Sq Ft - 720.53 Sq M
 Garage & Workshop Area
 722 Sq Ft - 67.07 Sq M
 Total Area
 8478 Sq Ft - 787.61 Sq M



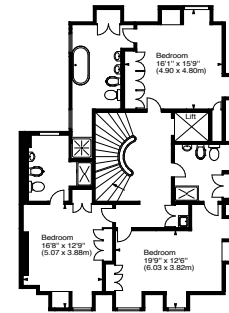
Lower Ground Floor



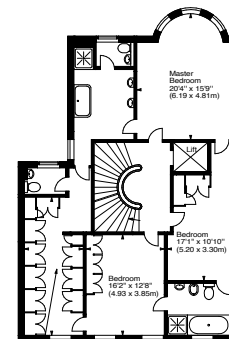
Ground Floor



Third Floor



Second Floor



First Floor



Price on Application

ILCHESTER PLACE W14



MILTON
STONE

Price on Application