



MILTON
STONE

Abingdon Road, London

£2,500,000

3 bedroom house for sale

Description

A charming and well-proportioned 3-bedroom freehold house with front and rear gardens arranged over three floors. The property features a double reception room on the first floor with a conservatory overlooking the 30 ft private rear garden and a spacious kitchen/dining room and sitting room on the ground floor. Abingdon Road is a highly sought-after one-way street that runs off Kensington High Street leading to Stratford Village and the extensive local amenities. Holland Park and Hyde Park are both within walking distance.

Tenure

Freehold



Key:
CH - Ceiling Height

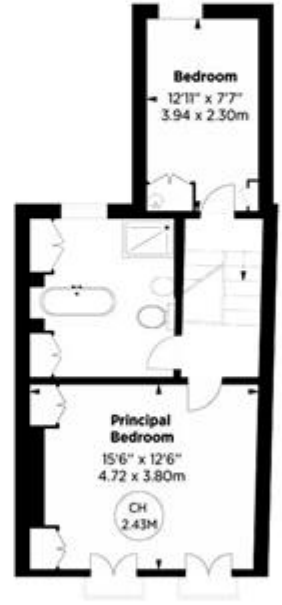


© Alex Winship Photography Ltd.

GARDEN FLOOR



RAISED GROUND FLOOR



FIRST FLOOR

Abingdon Road, W8

APPROX. GROSS INTERNAL AREA *
1501 Sq Ft - 139.44 Sq M

This floorplan is for GUIDANCE ONLY and NOT FOR VALUATION purposes.



ALEX WINSHIP

Through the garden to the rear, there is a well established garden, which will be shared with the adjacent property. The property is situated on a quiet residential street, close to the station and the local amenities. The property is a good example of a well built Victorian house, which has been well maintained and is in excellent condition. The property is a good example of a well built Victorian house, which has been well maintained and is in excellent condition.





Energy Efficiency Rating		
	Current	Potential
Very energy efficient - lower running costs		
(92-100) A		
(81-91) B		
(69-80) C		77
(55-68) D	56	
(39-54) E		
(21-38) F		
(1-20) G		

Viewing by appointment only
 Milton Stone - Head Office
 53 Abingdon Road, London W8 6AN
 Tel: 0207 938 2311 Email: sophie@miltonstone.com Website: <http://www.miltonstone.com>