



MILTON
STONE

Ladbroke Grove, W10

£725,000

2 bedroom apartment for sale

Description

A charming, bright, and beautifully presented apartment on the third floor of this attractive period building located in this highly sought-after location. The flat features a fabulous west facing reception room and a mezzanine TV room. The property is moments from the eclectic bars, restaurants and shops of Portobello Road and Golborne Road, Ladbroke Grove underground station is also a short walk away (Circle and Hammersmith & City lines)

Leasehold, 95 years remaining plus Share of Freehold

Tenure

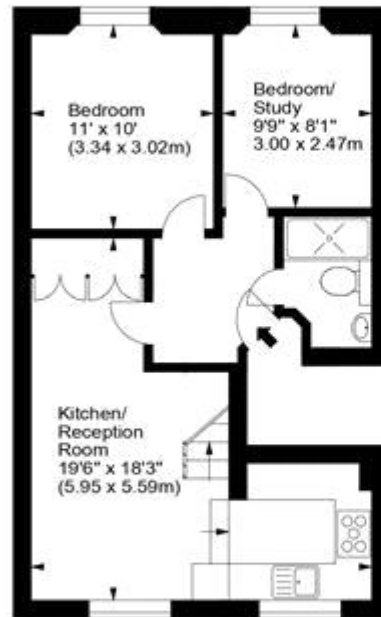
Share of Freehold



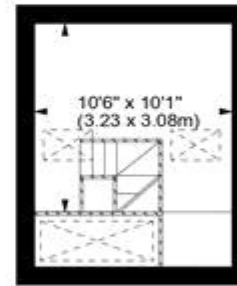
Ladbroke Grove, W10



Approx. Gross Internal Area
647 Sq Ft - 60.11 Sq M



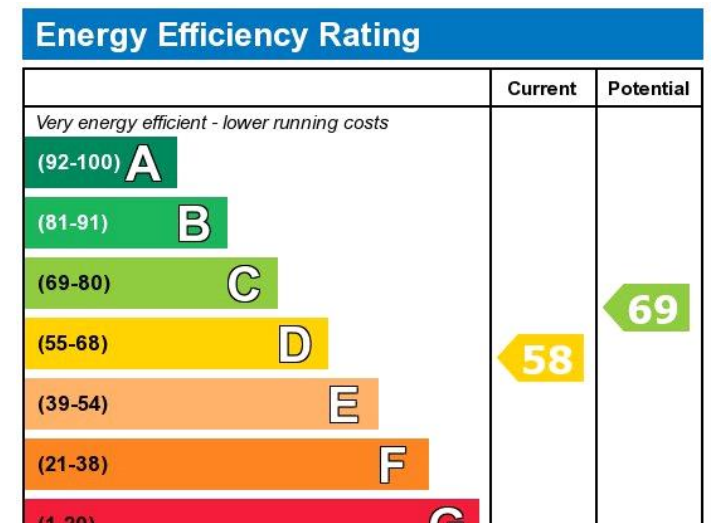
Third Floor



Mezzanine

For illustration purposes only. Not to scale.
All measurements are taken and shown at floor level.
www.r3photography.co.uk © Photography / Floor Plans / Lease Plans / EPCs





Viewing by appointment only
 Milton Stone - Head Office
 53 Abingdon Road, London W8 6AN
 Tel: 0207 938 2311 Email: sophie@miltonstone.com Website: <http://www.miltonstone.com>