



MILTON
STONE

Cornwall Gardens, SW7

£1,695,000

2 bedroom flat for sale

Description

A magnificent recently refurbished two bedroom, two bathroom apartment on the first floor with a lift, caretaker and access to the communal gardens (stc). This stunning apartment benefits from a bright and spacious reception room, separate kitchen, two spacious double bedrooms with ample storage as well as two marble bathrooms. Cornwall Gardens is a short walk from all the shops and restaurants of the Gloucester Road as well as Hyde Park. The closest tube station is Gloucester Road (circle, district and Piccadilly lines).

Tenure

Leasehold



CORNWALL GARDENS, SW7

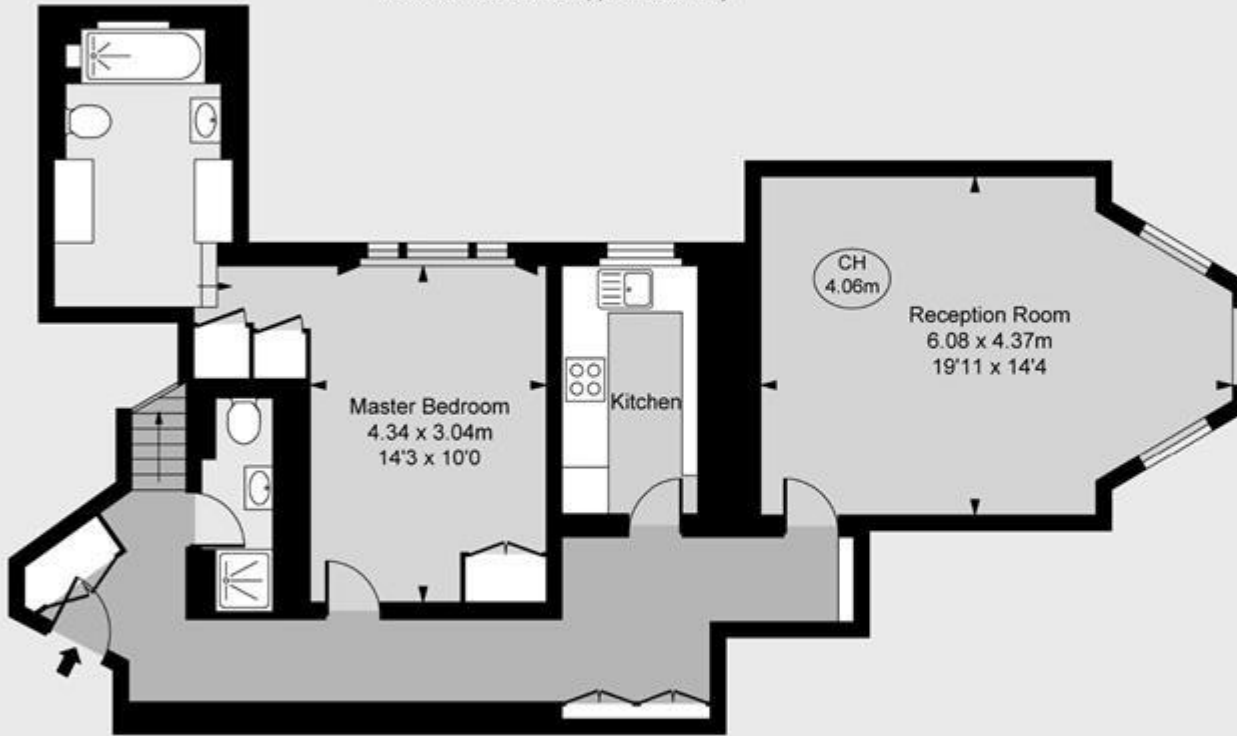
Gross internal area 949 sq ft (88.12 sq m)

CH = Ceiling Heights

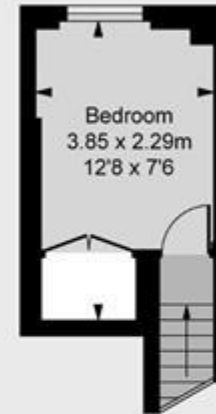
For identification purposes only.

For illustrative purposes only – not to scale

The position and size of doors, windows, appliances and other features are approximate only.



First Floor
Approximate Gross Internal Area
78.90 sq m / 849 sq ft



Second Floor
Approximate Gross Internal Area
9.22 sq m / 99 sq ft



Energy Efficiency Rating		Environmental Impact (CO ₂) Rating	
	Current	Potential	
Very energy efficient - lower running costs			Very environmentally friendly - lower CO ₂ emissions
(92-100) A			(92-100) A
(81-91) B			(81-91) B
(69-80) C			(69-80) C
(55-68) D			(55-68) D
(39-54) E			(39-54) E
(21-38) F			(21-38) F
(1-20) G			(1-20) G
Not energy efficient - higher running costs			Not environmentally friendly - higher CO ₂ emissions
England & Wales	EU Directive 2002/91/EC		England & Wales
			EU Directive 2002/91/EC

The energy efficiency rating is a measure of the overall efficiency of a home. The higher the rating the more energy efficient the home is and the lower the fuel bills will be.

The environmental impact rating is a measure of a home's impact on the environment in terms of carbon dioxide (CO₂).

Viewing by appointment only
Milton Stone - Head Office
53 Abingdon Road, London W8 6AN
Tel: 0207 938 2311 Email: sophie@miltonstone.com Website: <http://www.miltonstone.com>

